

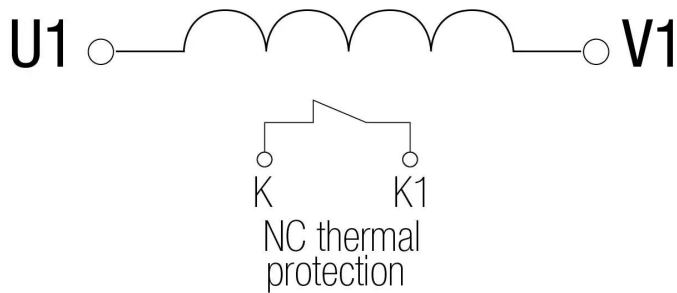
Single-phase cast resin line reactors for harmonic filtering with bimetal overtemperature protection in IP20 enclosure.



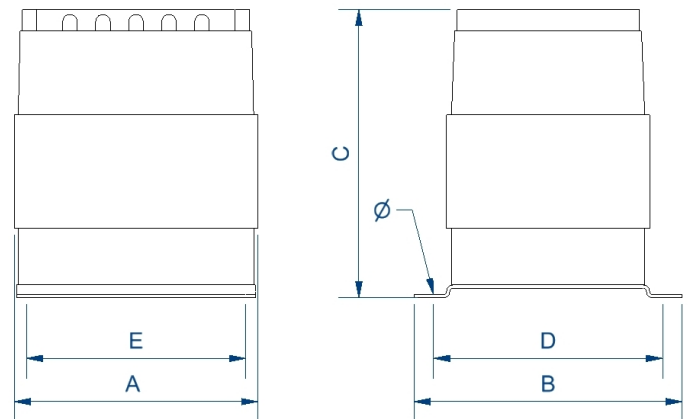
Technical characteristics

Rated current	25 A
Motor rating	3 kW / 4 CV
Line voltage	220 - 260 V
Reactor	0,879 mH (50 Hz)
Voltage drop	3% (50 Hz)
Frequency	50/60 Hz
Protection degree	IP-20
Thermal protection	Thermal protection (NC) 120°C
Cooling	AN
Ambient temperature	45 °C
Temperature rise	Class B - 130°C
Insulation	Class H - 180°C
Windings	Class HC - 200 °C
Test voltage	3 kV (1 min, 50 Hz)
Standards	IEC/EN/UNE-EN 60076-6, CE
Mounting	Screws
Weight	2,8 kg

Electric scheme



Dimensions



Dimensions (AxBxCxDxE): 96x112x126x96x77 mm 6Ø

Single-phase cast resin line reactors for harmonic filtering with bimetal overtemperature protection in IP20 enclosure.

Features

Advantages of resin technology:

- Protection against corrosive environments
- Protection against high vibration levels
- Protection against electrodynamic efforts
- Reduction of noise level
- Increase of product's lifespan

Includes thermal protection against overtemperatures

DIN rail or screw fixing up to R16.

Possibility of tailor-made manufacturing

Technical remarks about the use of line reactors:

- Reduction of the current harmonics generated by the equipment, reducing current consumption and improving power factor
- Reduction of the peak factor of the current wave, increasing equipment's lifespan
- Attenuation of the microcuts of the feeding voltage produced by the converter, source of the bad functioning of computers, robots and other equipments

Applications

- Single-phase low rating installations where harmonic filtering is required, such as those with non-linear loads, rectifiers, single-phase frequency converters, power supplies, etc.
- Environments with high humidity or corrosion, as well as vibrations and voltage peaks, due to the resin coating.

Downloads
