

# 1. Safety single phase transformers

SINGLE PHASE > NB200



## Features

Dry type transformer.

Encapsulated in IP20 resin.

No electrical part of the transformer is directly accessible by the user.

Full power in all the shots.

Tension selection through metal bridges (included).

Fixation by DIN rail (up to 100VA) or screws.

Possibility of custom manufacturing if the standard specifications are not required

## Technical Characteristics

Rating	200 VA
Input voltage	230/400/460 V
Output voltage	12/24 V
Frequency	50/60 Hz
Protection degree	IP-20
Cooling	AN
Ambient temperature	30°C
Temperature rise	Class B
Insulation	Class B - 130°C
Windings	Class HC - 220°C
Test voltage	4,6 kV (1 min, 50 Hz) pri-sec 3,2 kV (1 min, 50 Hz) pri-earth 2,5 kV (1 min, 50 Hz) sec-earth
Standards	IEC/EN/UNE-EN 61558, CE
Mounting	Screws
Weight	3,1 kg
Dimensions	96x112x110x96x76 mm 6Ø

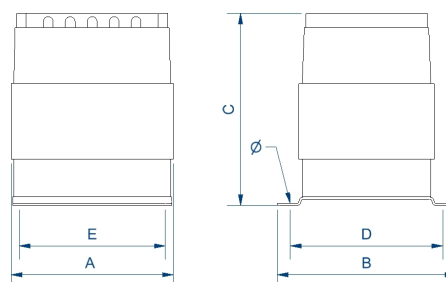
## Applications

The P, Q and N transformers are specially designed to adapt voltages in maneuver and control applications in both domestic and industrial environments as well as in electrical cabinets.

Another important application is the galvanic insulation of installations for safety reasons, as well as the generation of ground-referenced neutrals.

Thanks to the encapsulation in resin the transformers of the Series N are the optimal solution for zones humid areas with high degrees of corrosion and dust.

Areas with high levels of vibrations



+ Info [www.polylux.com](http://www.polylux.com)

Productos equivalentes