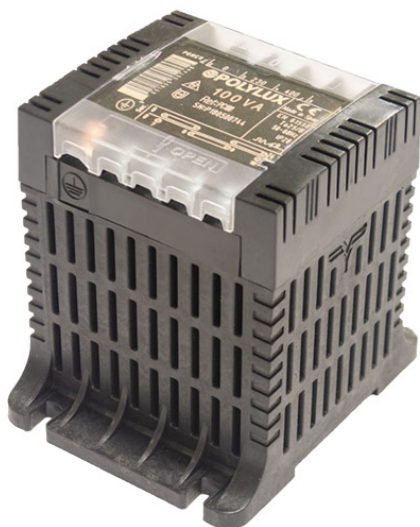


# 1. Safety single phase transformers

SINGLE PHASE > PB250

**POLYLUX**



## Features

Dry type transformer

IP-20 enclosure:

Last generation V-0 fireproof polymer box according to UL94 up to 2500 VA

Metallic box painted with epoxy polyester resin from 3150 VA

Safety class I, convertible in class II up to 2500 VA

Includes LED functioning indicator

Full power capacity in every connection

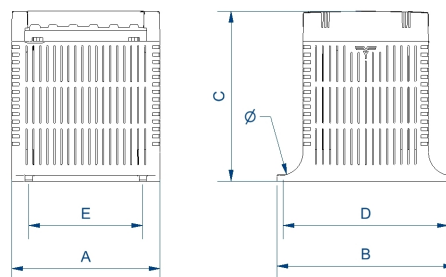
Voltage selection through metallic bridges (included)

Optional protection fuse

Possibility of tailor-made manufacturing

## Technical Characteristics

Rating	250 VA
Input voltage	230/400/460 V
Output voltage	12/24 V
Frequency	50/60 Hz
Protection degree	IP-20
Cooling	ANAN
Ambient temperature	30°C
Temperature rise	Class B
Insulation	Class B - 130°C
Windings	Class HC - 220°C
Test voltage	4,6 kV (1 min, 50 Hz) pri-sec - 3,2 kV (1 min, 50 Hz) pri-earth - 2,5 kV (1 min, 50 Hz) sec-earth
Standards	IEC/EN/UNE-EN 61558, CE
Mounting	Screws and DIN Rail
Weight	3,6 kg
Dimensions	106x123x118x110x74 mm 5Ø



+ Info [www.polylux.com](http://www.polylux.com)

Productos equivalentes