

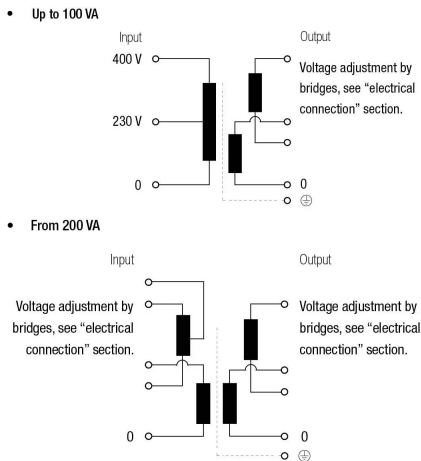
IPB Single phase dry type cast resin safety transformers with IP54 protection for outdoor installation.



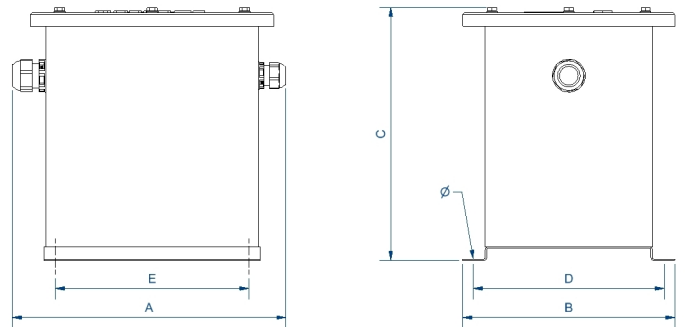
Technical characteristics

Rating	1600 VA
Input voltage	230/400/460 V
Output voltage	12/24 V
Frequency	50/60 Hz
Protection degree	IP-54
Ambient temperature	45 °C
Cooling	AN
Temperature rise	Class B - 130°C
Insulation	Class H - 180°C
Windings	Class HC - 200 °C
Test voltage	4,6 kV (1 min, 50 Hz) pri-sec - 3,2 kV (1 min, 50 Hz) pri-earth - 2,5 kV (1 min, 50 Hz) sec-earth
Standards	IEC/EN/UNE-EN 61558, CE
Mounting	Screws
Weight	47,3 kg

Electric scheme

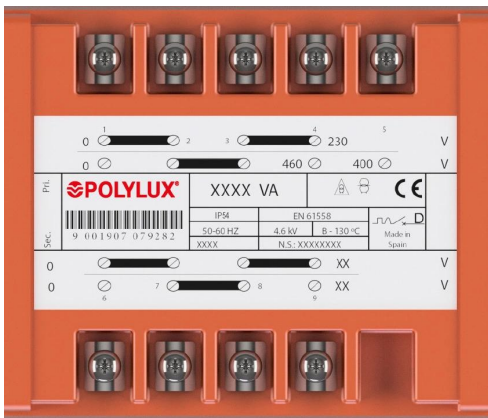


Dimensions



Dimensions (AxBxCxDxE): 260x272x310x250x238 mm 7∅

Electrical connection



≥ 200 VA

Input:

230 V

Connection: 1-4
Bridges: 1-2 / 3-4;

400 V

Connection: 1-5
Bridges: 2-3

460 V

Connection: 1-4
Bridges: 2-3

Output:

IPB 12 V

IPD 115 V

Connection: 6-9
Bridges: 6-7 / 8-9

IPB 24 V

IPD 230 V

Connection: 6-9
Bridges: 7-8

Features

Dry type resin cast transformer

Specially designed for applications in places with risk of direct contact with water or other liquids

Advantages of resin technology:

- Protection against corrosive environments
- Protection against high vibration levels
- Protection against electrodynamic efforts
- Reduction of noise level
- Increase of product's lifespan

Safety class I

Full power capacity in every connection

Includes lifting eyebolts. Also includes thermal protection against over temperature until 8 kVA -> confirm

Possibility of tailor-made manufacturing

Applications

- The IP transformers are specially designed to adapt voltages in control and safety applications and control for voltages for human security in outdoors
- Another important application is the galvanic isolation of facilities for safety reasons, as well as the generation of neutrals referenced to earth

Available accessories

- Fuse in primary input.

Downloads
