

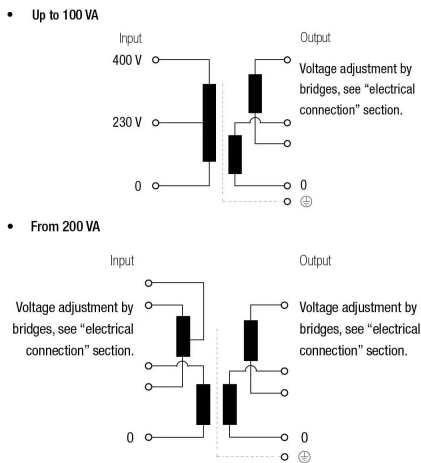
IPB Single phase dry type cast resin safety transformers with IP54 protection for outdoor installation.



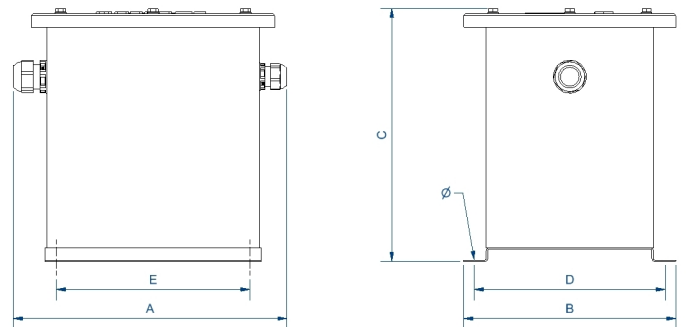
Technical characteristics

Rating	500 VA
Input voltage	230/400/460 V
Output voltage	12/24 V
Frequency	50/60 Hz
Protection degree	IP-54
Ambient temperature	45 °C
Cooling	AN
Temperature rise	Class B - 130°C
Insulation	Class H - 180°C
Windings	Class HC - 200 °C
Test voltage	4,6 kV (1 min, 50 Hz) pri-sec - 3,2 kV (1 min, 50 Hz) pri-earth - 2,5 kV (1 min, 50 Hz) sec-earth
Standards	IEC/EN/UNE-EN 61558, CE
Mounting	Screws
Weight	11,9 kg

Electric scheme

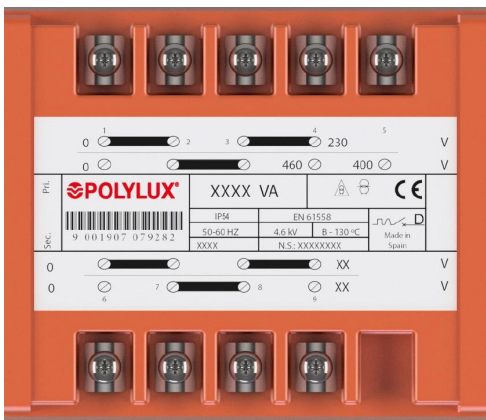


Dimensions



Dimensions (AxBxCxDxE): 195x198x220x178x173 mm 7Ø

Electrical connection



≥ 200 VA

Input:

230 V

Connection: 1-4
Bridges: 1-2 / 3-4;

400 V

Connection: 1-5
Bridges: 2-3

460 V

Connection: 1-4
Bridges: 2-3

Output:

IPB 12 V

IPD 115 V

IPB 24 V

IPD 230 V

Connection: 6-9
Bridges: 6-7 / 8-9

Connection: 6-9
Bridges: 7-8

IPB Single phase dry type cast resin safety transformers with IP54 protection for outdoor installation.

Features

Dry type resin cast transformer

Specially designed for applications in places with risk of direct contact with water or other liquids

Advantages of resin technology:

- Protection against corrosive environments
- Protection against high vibration levels
- Protection against electrodynamic efforts
- Reduction of noise level
- Increase of product's lifespan

Safety class I

Full power capacity in every connection

Includes lifting eyebolts. Also includes thermal protection against over temperature until 8 kVA -> confirm

Possibility of tailor-made manufacturing

Applications

- The IP transformers are specially designed to adapt voltages in control and safety applications and control for voltages for human security in outdoors
- Another important application is the galvanic isolation of facilities for safety reasons, as well as the generation of neutrals referenced to earth

Available accessories

- Fuse in primary input.

Downloads
