

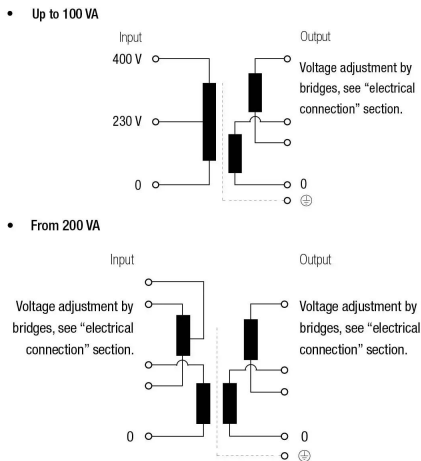
Single phase dry type cast resin control and isolation transformers with IP54 protection for outdoor installation.



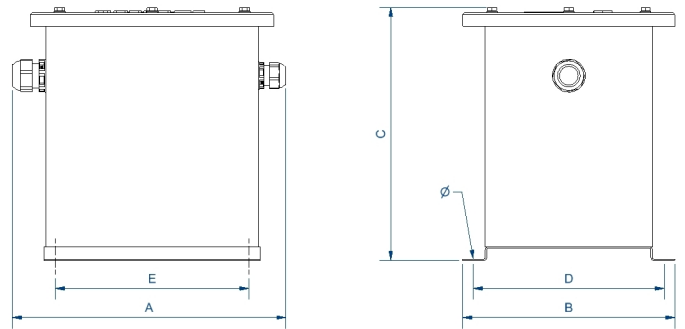
Technical characteristics

Rating	2000 VA
Input voltage	230/400/460 V
Output voltage	115/230 V
Frequency	50/60 Hz
Protection degree	IP-54
Ambient temperature	45 °C
Cooling	AN
Temperature rise	Class B - 130°C
Insulation	Class H - 180°C
Windings	Class HC - 200 °C
Test voltage	4,6 kV (1 min, 50 Hz) pri-sec - 3,2 kV (1 min, 50 Hz) pri-earth - 2,5 kV (1 min, 50 Hz) sec-earth
Standards	IEC/EN/UNE-EN 61558, CE
Mounting	Screws
Weight	49,2 kg

Electric scheme

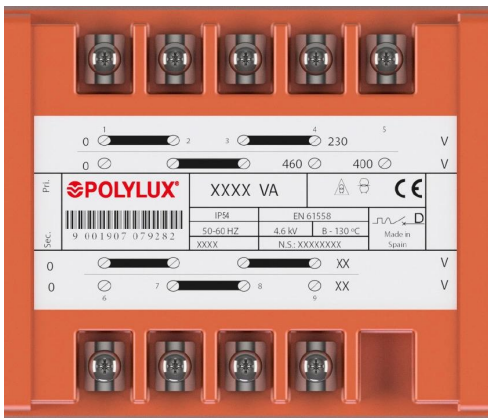


Dimensions



Dimensions (AxBxCxDxE): 260x272x330x250x238 mm 7Ø

Electrical connection



≥ 200 VA

Input:

230 V

Connection: 1-4
Bridges: 1-2 / 3-4;

400 V

Connection: 1-5
Bridges: 2-3

460 V

Connection: 1-4
Bridges: 2-3

Output:

IPB 12 V

IPD 115 V

IPB 24 V

IPD 230 V

Connection: 6-9
Bridges: 6-7 / 8-9

Connection: 6-9
Bridges: 7-8

Single phase dry type cast resin control and isolation transformers with IP54 protection for outdoor installation.

Features

Dry type resin cast transformer

Specially designed for applications in places with risk of direct contact with water or other liquids

Advantages of resin technology:

- Protection against corrosive environments
- Protection against high vibration levels
- Protection against electrodynamic efforts
- Reduction of noise level
- Increase of product's lifespan

Safety class I

Full power capacity in every connection

Includes lifting eyebolts. Also includes thermal protection against over temperature until 8 kVA -> confirm

Possibility of tailor-made manufacturing

Downloads
