

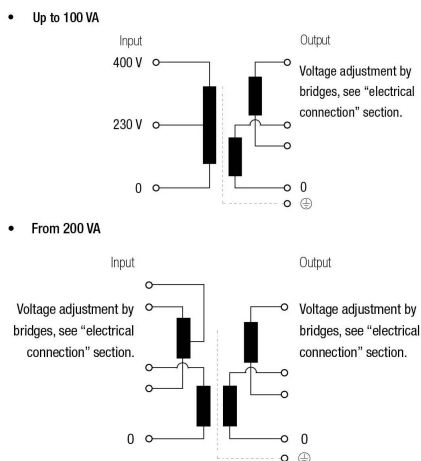
Single phase dry type, cast resin control and isolation transformers, IP20 with protection to prevent direct contact with electrical parts.



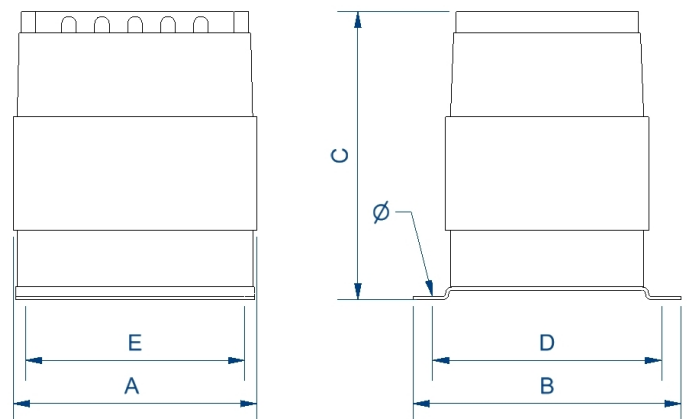
### Technical characteristics

Rating	315 VA
Input voltage	230/400/460 V
Output voltage	115/230 V
Frequency	50/60 Hz
Protection degree	IP-20
Cooling	AN
Ambient temperature	45 °C
Temperature rise	Class B - 130°C
Insulation	Class H - 180°C
Windings	Class HC - 200 °C
Test voltage	4,6 kV (1 min, 50 Hz) pri-sec 3,2 kV (1 min, 50 Hz) pri-earth 2,5 kV (1 min, 50 Hz) sec-earth
Standards	IEC/EN/UNE-EN 61558, CE
Mounting	Screws
Weight	4,5 kg

### Electric scheme

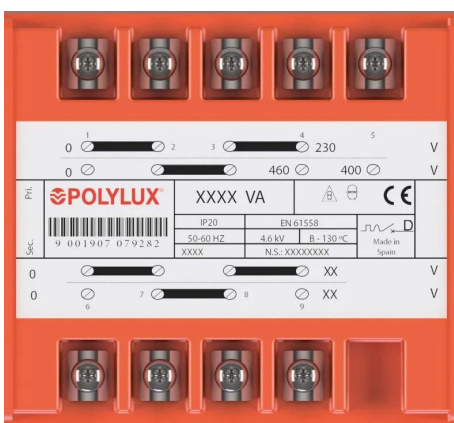


### Dimensions



Dimensions (AxBxCxDxE): 108x124x124x106x89 mm 6Ø

### Electrical connection



≥ 200 VA

**Input:**

230 V

Connection: 1-4  
Bridges: 1-2 / 3-4

400 V

Connection: 1-5  
Bridges: 2-3

460 V

Connection: 1-4  
Bridges: 2-3

**Output:**

Reference NB 12 V  
Reference NC 24 V  
Reference ND 115 V

Reference NB 24 V  
Reference NC 48 V  
Reference ND 230 V

Connection: 6-9  
Bridges: 6-7 / 8-9

Connection: 6-9  
Bridges: 7-8

Single phase dry type, cast resin control and isolation transformers, IP20 with protection to prevent direct contact with electrical parts.

## Features

---

Dry type transformer.

- Encapsulated in IP20 resin.

No electrical part of the transformer is directly accessible by the user.

Full power in all the shots.

Tension selection through metal bridges (included).

Fixation by DIN rail (up to 100VA) or screws.

Possibility of custom manufacturing if the standard specifications are not required

## Applications

---

- The P, Q and N transformers are specially designed to adapt voltages in maneuver and control applications in both domestic and industrial environments as well as in electrical cabinets.
- Another important application is the galvanic insulation of installations for safety reasons, as well as the generation of ground-referenced neutrals.
- Thanks to the encapsulation in resin the transformers of the Series N are the optimal solution for zones humid areas with high degrees of corrosion and dust.
- Areas with high levels of vibrations

## Available accessories

---

Available accessories

## Downloads

---

Certificates.

- [CE Certificate.](#)
- Configuration of bridges P /Q / N Series, rating :25-100 VA. [Watch video](#)
- Configuration of bridges P /Q / N Series, rating:160-5000 VA. [Watch video](#)