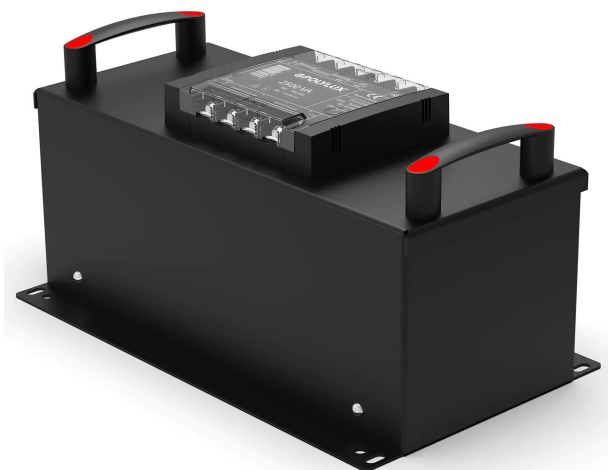


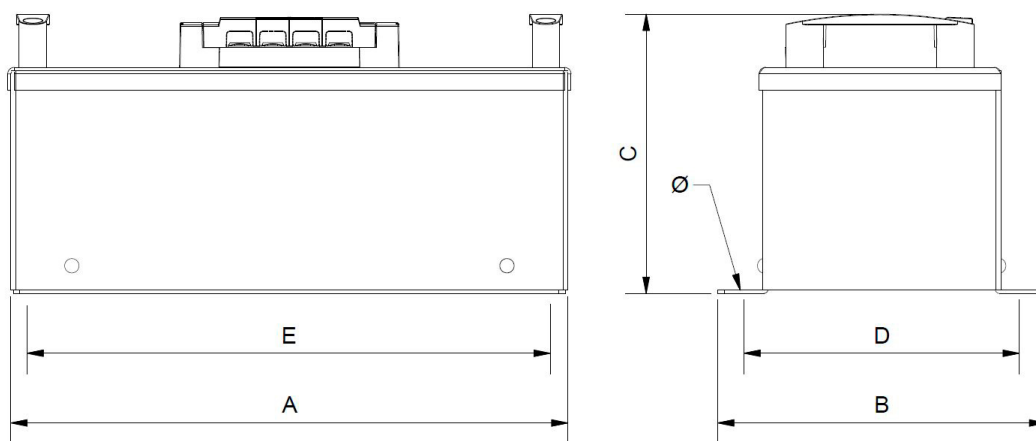
Three-phase dry type cast resin isolation measuring transformers for high corrosion and vibration environments.



Technical characteristics

Rating	30(CL0,2)-50(CL0,5)-75(CL1)VA
Input voltage	100..500 V
Output voltage	100..110 V
Frequency	50/60 Hz
Connection group	Dd0/Dyn11/Dyn5/Yd5/Yyn0/Yzn11/Dzn0/Yyn0
Protection degree	IP-20
Cooling	AN
Ambient temperature	45 °C
Thermal rating	6 times nominal rating
Overvoltage	1,2 times nominal voltage
Temperature rise	Class B - 130°C
Insulation	Class H - 180°C
Windings	Class HC - 200 °C
Test voltage	3 kV (1 min, 50 Hz)
Standards	IEC/EN/UNE-EN 61869-3, CE
Mounting	Screws
Weight	20,9 kg

Dimensions



Dimensions (AxBxCxDxE): 350x200x170x170x325 mm 6Ø

Electrical connection



Three-phase dry type cast resin isolation measuring transformers for high corrosion and vibration environments.

Features

Dry type cast resin transformer

Advantages of resin technology:

- Protection against corrosive environments
- Protection against high vibration levels
- Protection against electrodynamic efforts
- Reduction of noise level
- Increase of product's lifespan

IP-20 metallic enclosure with epoxy paint.

Safety class I, convertible in class II

Includes LED functioning indicator

Possibility of tailor-made manufacturing

Downloads
