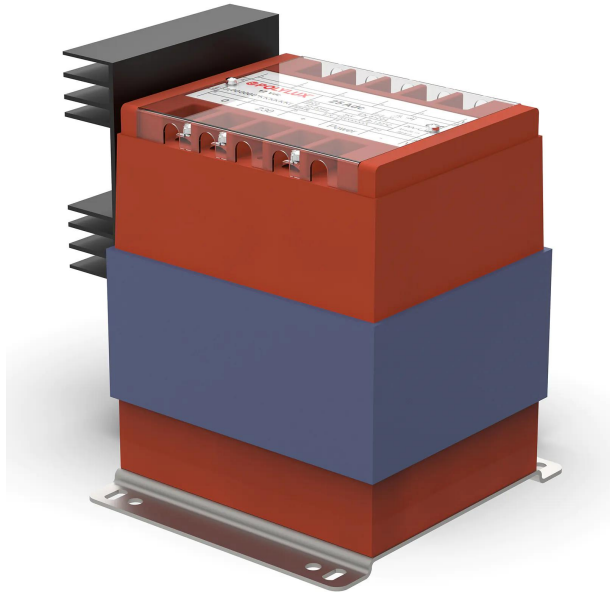


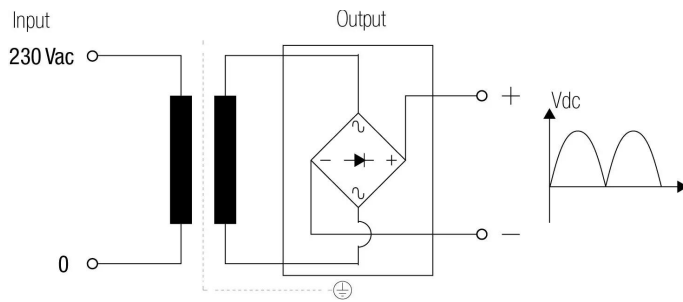
Single-phase cast resin transformer rectifiers with 48% dry type ripple, IP20 with protection to prevent direct contact with electrical parts.



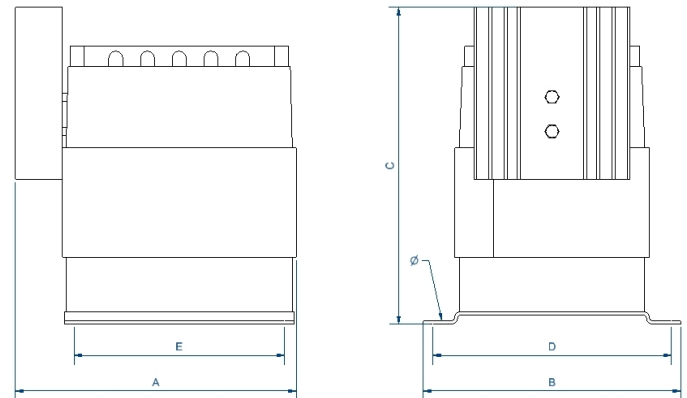
### Technical characteristics

|                     |                                                                                           |
|---------------------|-------------------------------------------------------------------------------------------|
| Rating              | 6,3 Adc                                                                                   |
| Input voltage       | 230 Vac                                                                                   |
| Output voltage      | 24 Vdc                                                                                    |
| Output ripple       | 48%                                                                                       |
| Frequency           | 50/60 Hz                                                                                  |
| Protection degree   | IP-20                                                                                     |
| Cooling             | AN                                                                                        |
| Ambient temperature | 45 °C                                                                                     |
| Temperature rise    | Class B - 130°C                                                                           |
| Insulation          | Class H - 180°C                                                                           |
| Windings            | Class HC - 200 °C                                                                         |
| Test voltage        | 3 kV (1 min, 50 Hz) pri-sec 3 kV (1 min, 50 Hz) pri-earth 0,5 kV (1 min, 50 Hz) sec-earth |
| Standards           | IEC/EN/UNE-EN 61204, CE                                                                   |
| Mounting            | Screws                                                                                    |
| Weight              | 3,3 kg                                                                                    |

### Electric scheme



### Dimensions



Dimensions (AxBxCxDxE): 133x112x128 mm 6Ø

Single-phase cast resin transformer rectifiers with 48% dry type ripple, IP20 with protection to prevent direct contact with electrical parts.

## Features

---

Rectifier transformer dry type encapsulated in resin:

- Protection against corrosive environments.
- Protection against high levels of vibrations.
- Protection against electrodynamic efforts.
- Reduction of the noise level.
- Increase of the useful life of the product.

Safety class I.

Includes LED operation indicator and fuse starting at 300W.

DIN rail or screw fixing for: TRA1,6, TRA2,5, TRB1,6 and TRB2,5.

Possibility of custom manufacturing if the standard specifications are not required.

## Applications

---

- TR rectifier transformers are used in applications where loads require DC power and they can operate with ripple voltage of approximately 5%.

## Available accessories

---

Available accessories

- Fuse in primary

## Downloads

---