

1. Safety single phase transformers

SINGLE PHASE > NB63



Features

Dry type transformer.

Encapsulated in IP20 resin.

No electrical part of the transformer is directly accessible by the user.

Full power in all the shots.

Tension selection through metal bridges (included).

Fixation by DIN rail (up to 100VA) or screws.

Possibility of custom manufacturing if the standard specifications are not required

Technical Characteristics

| | |
|---------------------|---|
| Rating | 63 VA |
| Input voltage | 230/400 V |
| Output voltage | 12/24 V |
| Frequency | 50/60 Hz |
| Protection degree | IP-20 |
| Cooling | AN |
| Ambient temperature | 30°C |
| Temperature rise | Class B |
| Insulation | Class B - 130°C |
| Windings | Class HC - 220°C |
| Test voltage | 4,6 kV (1 min, 50 Hz) pri-sec - 3,2 kV (1 min, 50 Hz) pri-earth - 2,5 kV (1 min, 50 Hz) sec-earth |
| Standards | IEC/EN/UNE-EN 61558, CE |
| Mounting | Screws and DIN Rail |
| Weight | 1,5 kg |
| Dimensions | 75x97x89x80x56 mm 6Ø |

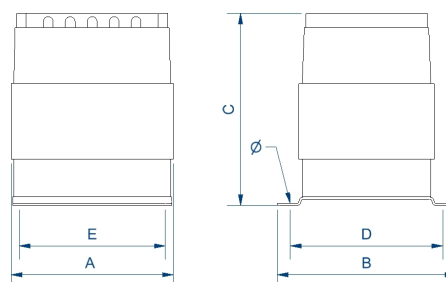
Applications

The P, Q and N transformers are specially designed to adapt voltages in maneuver and control applications in both domestic and industrial environments as well as in electrical cabinets.

Another important application is the galvanic insulation of installations for safety reasons, as well as the generation of ground-referenced neutrals.

Thanks to the encapsulation in resin the transformers of the Series N are the optimal solution for zones humid areas with high degrees of corrosion and dust.

Areas with high levels of vibrations



+ Info www.polylux.com

Productos equivalentes