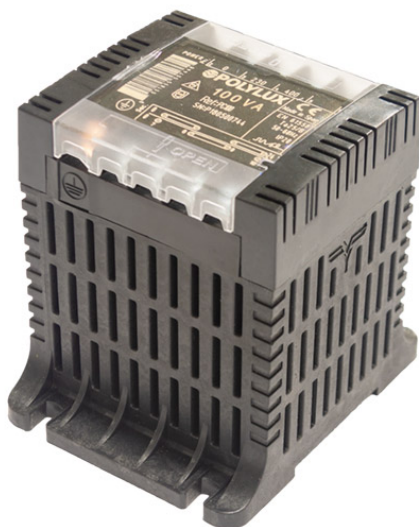


1. Reactors for harmonics filtering in single phase lines

PR | QR | R FAMILY > PR6.3



Features

Reactor

IP-20 enclosure in last generation V-0 fireproof metallic polymer box according to UL94

?Safety class I, convertible in class II

Includes thermal protection against overtemperatures

Possibility of tailor-made manufacturing

Technical remarks about the use of line reactors:

Reduction of the current harmonics generated by the equipment, reducing current consumption and improving power factor

Reduction of the peak factor of the current wave, increasing equipment's lifespan

Attenuation of the microcuts of the feeding voltage produced by the converter, source of the bad functioning of computers, robots and other equipments

Technical Characteristics

Rated current	6,3 A
Motor rating	0,55 kW / 0,75 CV
Line voltage	220 - 260 V
Reactor	3,486 mH (50 Hz)
Voltage drop	3% (50 Hz)
Frequency	50/60 Hz
Protection degree	IP-20
Thermal protection	Thermal protection (NC) 120°C
Cooling	ANAN
Ambient temperature	25°C
Temperature rise	Class B
Insulation	Class B - 130°C
Windings	Class HC - 220°C
Test voltage	3 kV (1 min, 50 Hz)
Standards	IEC/EN/UNE-EN 60076-6, CE
Mounting	Screws and DIN Rail
Weight	1,3 kg
Dimensions	106x123x118x110x74 mm 5Ø

+ Info www.polylux.com

Productos equivalentes