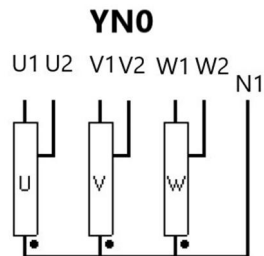
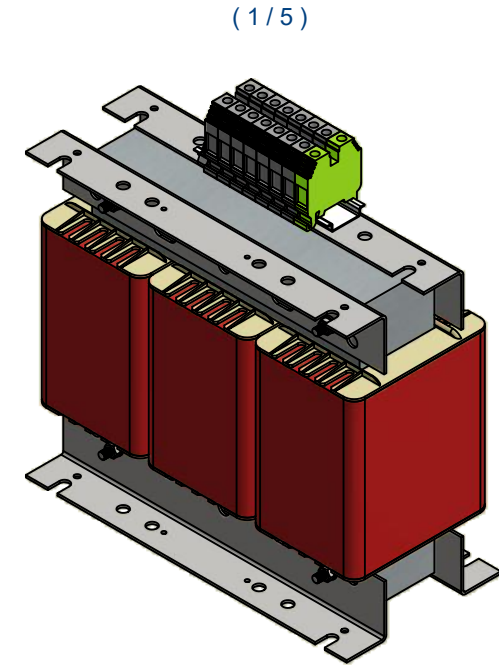
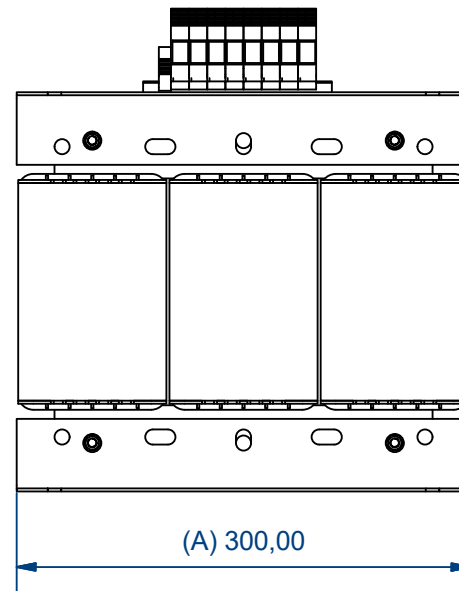
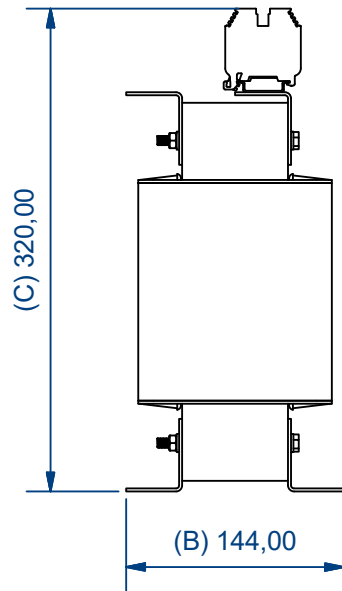
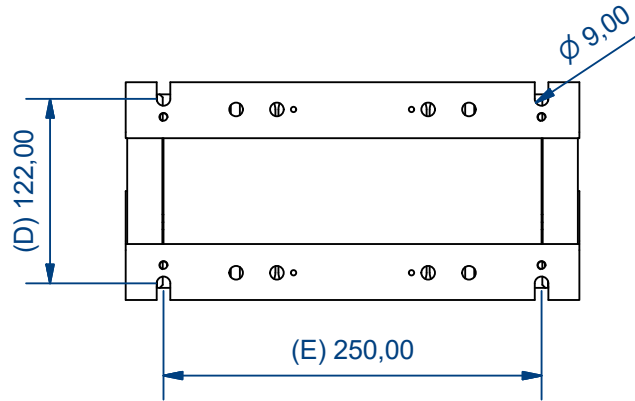


Connection (3/5)



Characteristics											
IP	Vector Group	Rated power	Voltage Pri.	In Pri.	Pri. Connection	Voltage Sec.	In Sec.	Sec. Connection	Ground connection		
00	YN0	10 kVA	400 V	14,43 A	Terminal wire up to 16 mm ²	230 V	25,10 A	Terminal wire up to 16 mm ²	Terminal wire up to 16 mm ²		
Drawn by: IVV-25/10/2023		Modified by: -		Approved by: AMR-24/10/2023		Replaces: PE.C.NOR.AUTX10.V02		Material: Generic			
						Surface treatment: RAL 7035		Weight: N/D			
POLYLUX			Description: AUTX10 Drawing					Units: mm		Directory:	
			Drawing reference: PE.C.NOR.AUTX10.V02		ERP reference: AUTX10		Distributed to:		Technical D. Commercial		Scale: 1 / 5
						Customers		Page: 1 / 1			