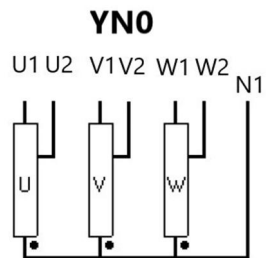
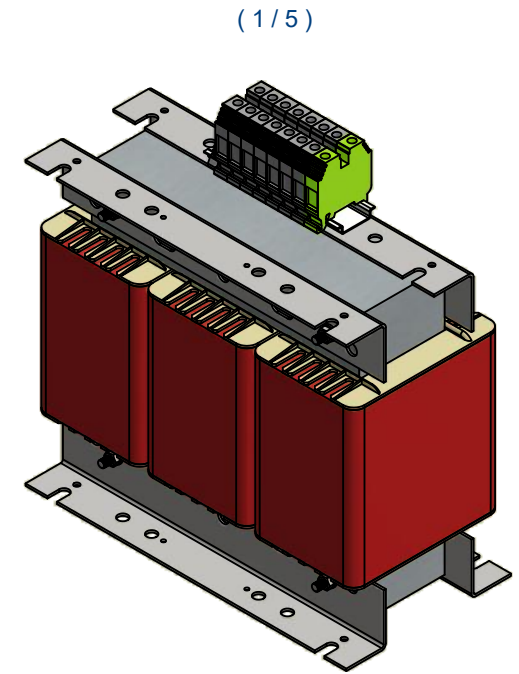
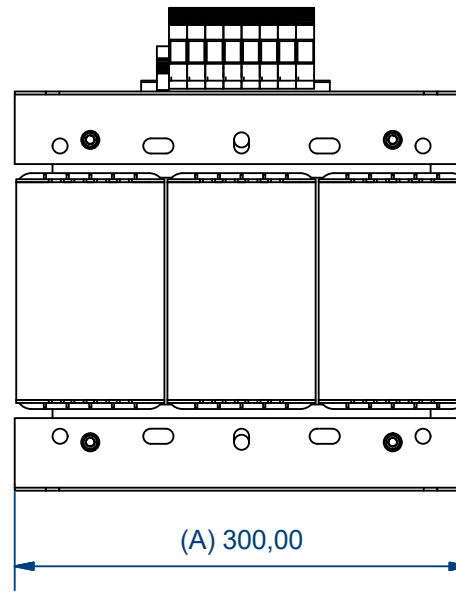
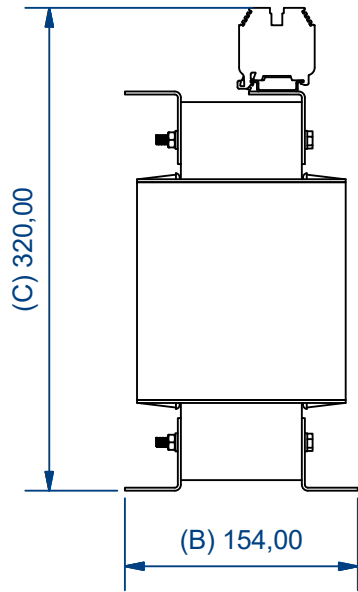
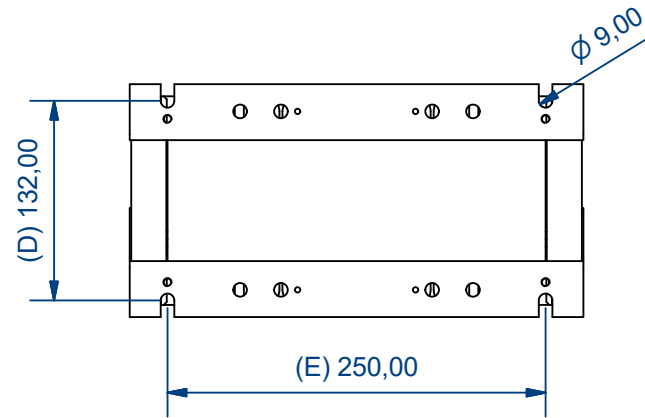


Connection (3/5)



Characteristics										
IP	Vector Group	Rated power	Voltage Pri.	In Pri.	Pri. Connection	Voltage Sec.	In Sec.	Sec. Connection	Ground connection	
00	YN0	12,5 kVA	400 V	18,04 A	Terminal wire up to 16 mm <sup>2</sup>	230 V	31,38 A	Terminal wire up to 16 mm <sup>2</sup>	Terminal wire up to 16 mm <sup>2</sup>	
Drawn by: IVV-25/10/2023		Modified by: -		Approved by: AMR-24/10/2023		Replaces: PE.C.NOR.AUTX12,5.V01		Material: Generic		
						Surface treatment: RAL 7035		Weight: N/D		
								Valid:		
			Description: AUTX12,5 Drawing					Units: mm		Directory:
			Drawing reference: PE.C.NOR.AUTX12,5.V02		ERP reference: AUTX12,5		Distributed to:			Scale: 1 / 5
						Technical D. Commercial		Page: 1 / 1		