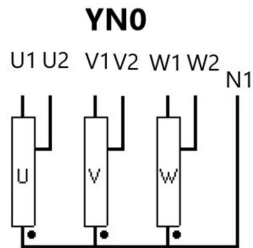
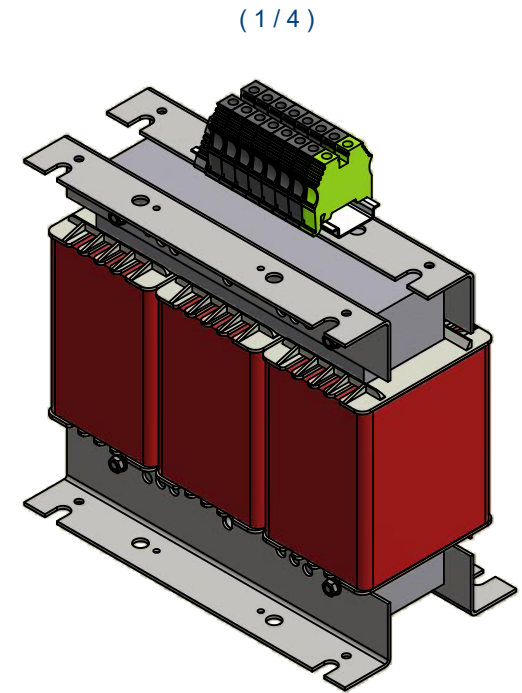
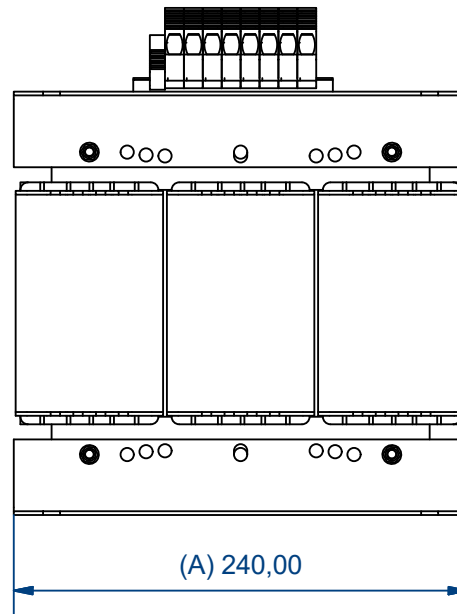
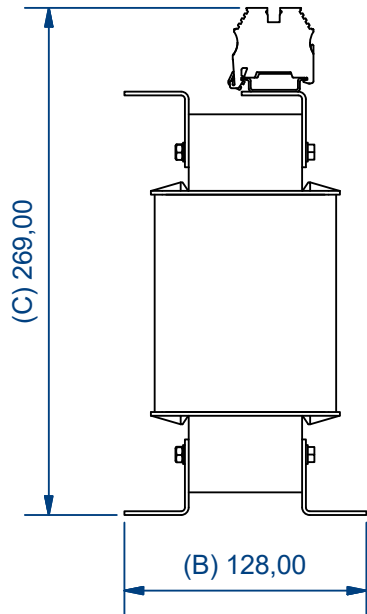
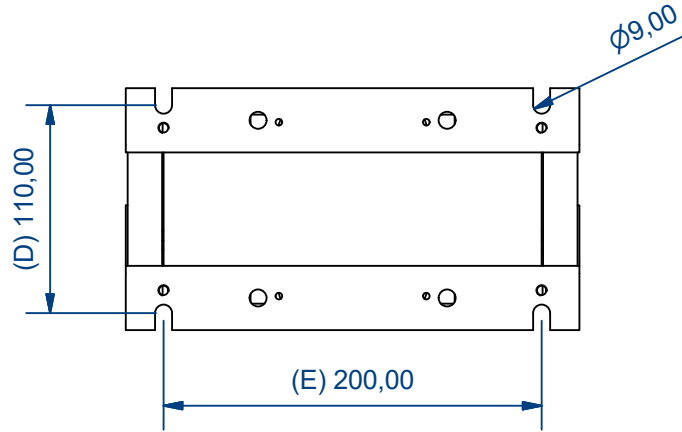


Connection (2/3)



Characteristics									
IP	Vector Group	Rated power	Voltage Pri.	In Pri.	Pri. Connection	Voltage Sec.	In Sec.	Sec. Connection	Ground connection
00	YN0	5 kVA	400 V	7,22 A	Terminal wire up to 10 mm ²	230 V	12,55 A	Terminal wire up to 10 mm ²	Terminal wire up to 10 mm ²
Drawn by: IVV-24/10/2023		Modified by: -		Approved by: AMR-23/10/2023		Replaces: PE.C.NOR.AUTX5.V02		Material: Generic	
							Surface treatment: N/D		Weight: N/D
							Description: AUTX5 Drawing		Units: mm
Drawing reference: PE.C.NOR.AUTX5.V03				ERP reference: AUTX5		Distributed to:		Technical D.	Scale: 1 / 4
						Commercial D.		Customers	Page: 1 / 1