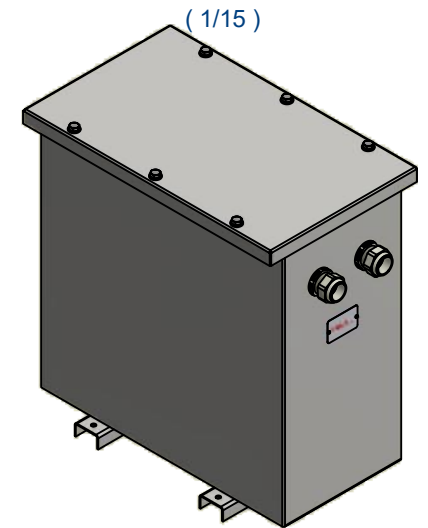
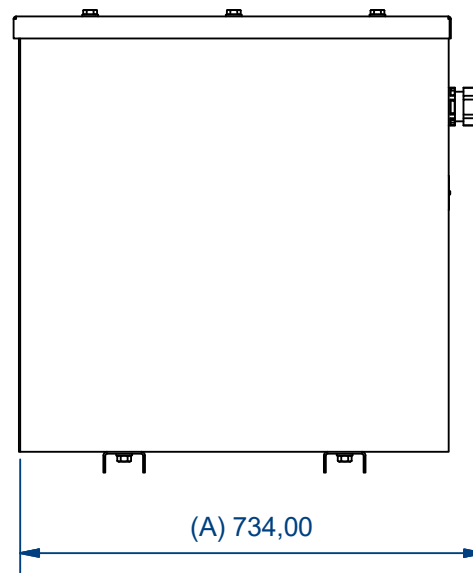
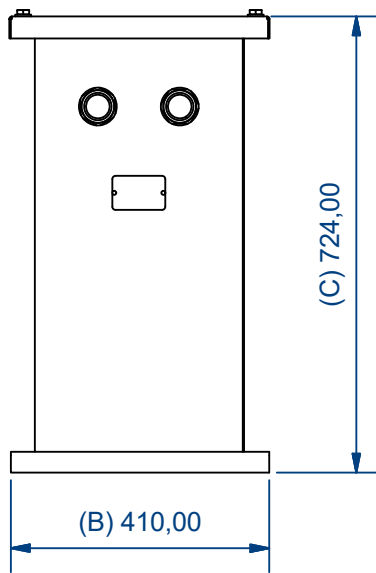
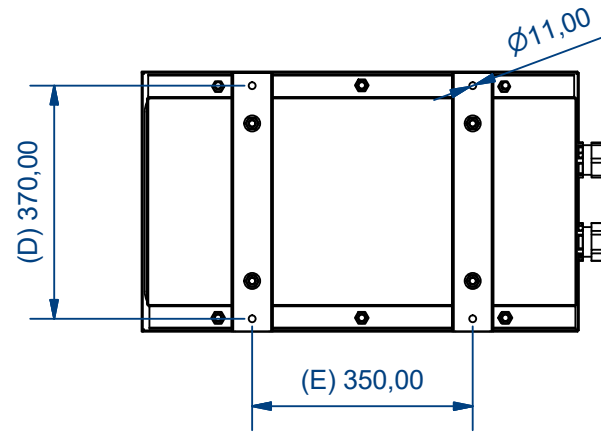
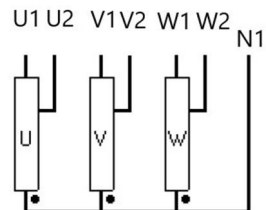


Connexion ( 1/2 )



**YN0**



Characteristics									
IP	Vector Group	Rated power	Voltage Pri.	In Pri.	Pri. Connection	Voltage Sec.	In Sec.	Sec. Connection	Ground connection
54	YN0	31,5 kVA	400 V	45,5 A	Terminal wire up to 16 mm <sup>2</sup>	230 V	79,1 A	Terminal wire up to 16 mm <sup>2</sup>	Terminal wire up to 16 mm <sup>2</sup>
Drawn by: OPS-04/01/2024		Modified by: -		Approved by: AMR-04/01/2024		Replaces:		Material:	
						Description: AUTZ31,5 Drawing		Units: mm	
						Drawing reference: PE.C.NOR.AUTZ31,5.V01		ERP reference: AUTZ31,5	
Scale:								Page:	
1 / 12								1 / 1	