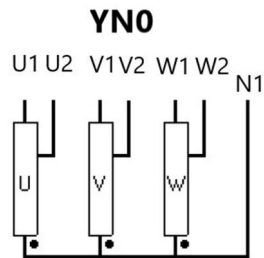
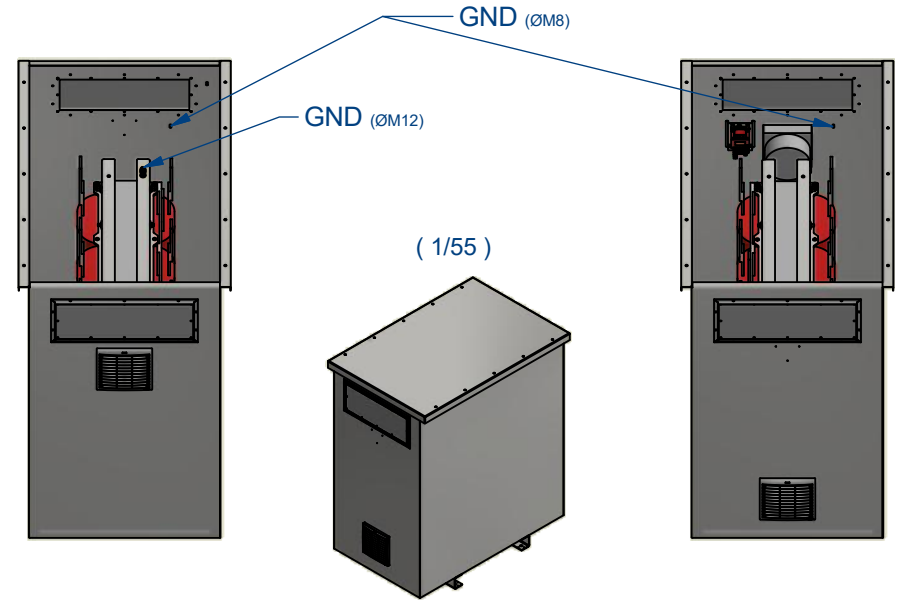
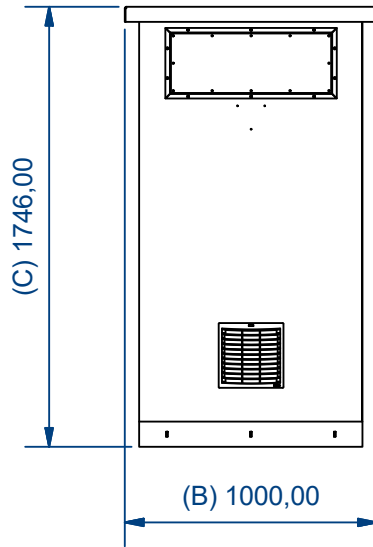
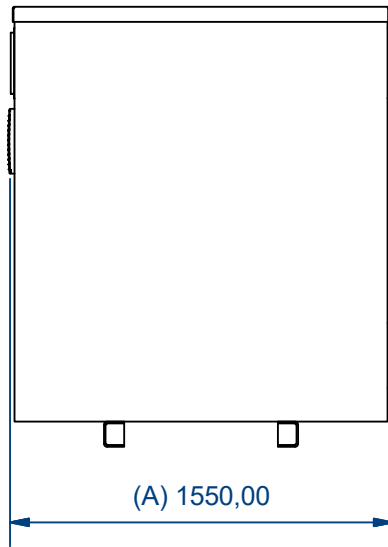
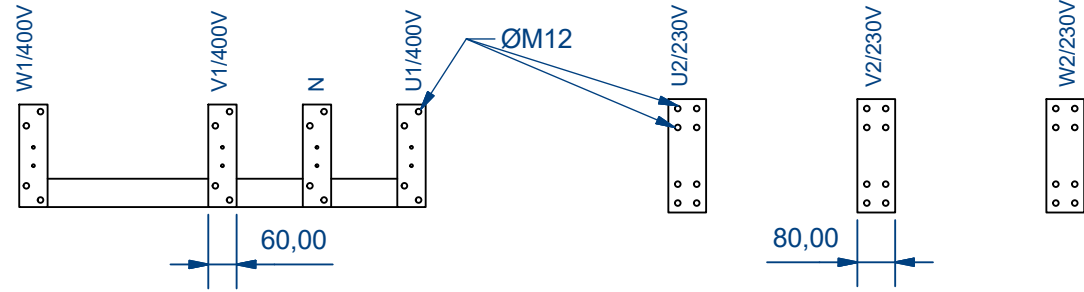


Primary Connexion

Secondary Connexion



Characteristics									
IP	Vector Group	Rated power	Voltage Pri.	In Pri.	Pri. Connection	Voltage Sec.	In Sec.	Sec. Connection	Ground connection
54	YN0	8000 kVA	400 V	1154,7 A	60X10 mm Al Plate Ø M12	230 V	2008,2 A	80X10 mm Al Plate Ø M12	M12 Brass stud
Drawn by: OPS-05/01/2024		Modified by: -		Approved by: AMR-05/01/2024		Replaces:		Material: Generic	
							Surface treatment: N/D		Weight: N/D
							Description: AUTZ800 Drawing		Units: mm
Drawing reference: PE.C.NOR.AUTZ800.V01				ERP reference: AUTZ800		Distributed to:		Technical D.	Scale: 1 / 30
						Commercial D.		Customers	Page: 1 / 1