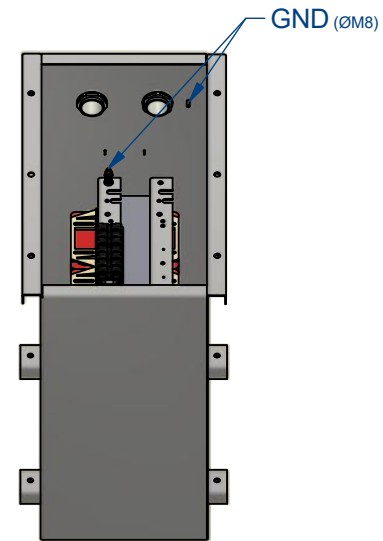
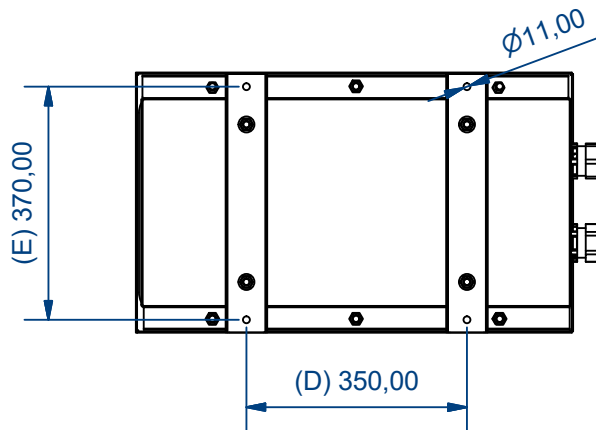
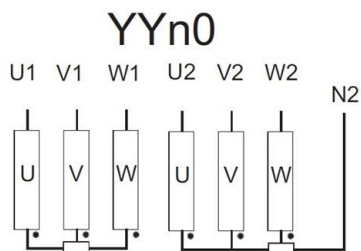
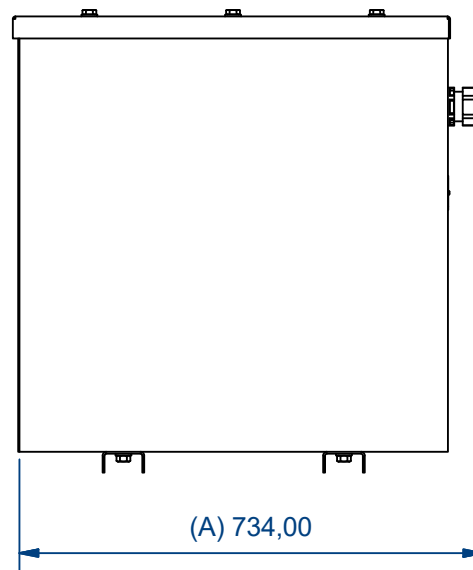
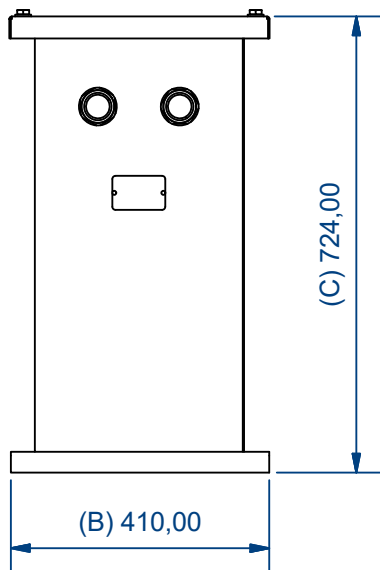
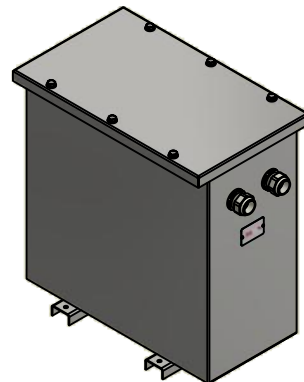


Connection (1/2)



(1/20)



Characteristics											
IP	Vector Group	Rated power	Voltage Pri.	In Pri.	Pri. Connection	Voltage Sec.	In Sec.	Sec. Connection	Ground connection		
54	Yyn0	25 kVA	400 V	36.1 A	Terminal M6 Max. width =16mm	400 V	36.1 A	Terminal M6 Max. width =16mm	M8 Brass Stud		
Drawn by: SB-21/03/2023		Modified by: -		Approved by: MMB-21/03/2023		Replaces: -		Material:			
								Surface treatment: N/D			
								Weight: 67,431 kg			
								Valid: Yes			
			Description: TTZ 25 Drawing					Units: mm		Directory:	
			Drawing reference: PE.C.NOR.TTZ25.V02			ERP reference: TTZ 25		Distributed to:		Technical D.	
							Commercial D.		Customers	Page: 1 / 1	